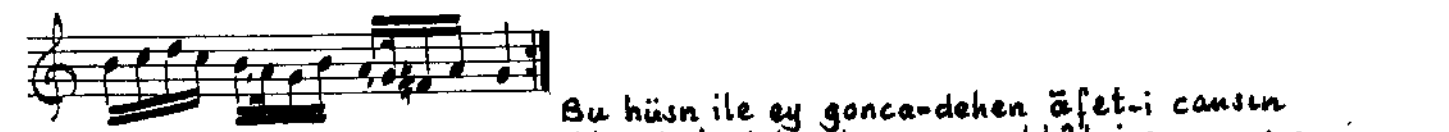
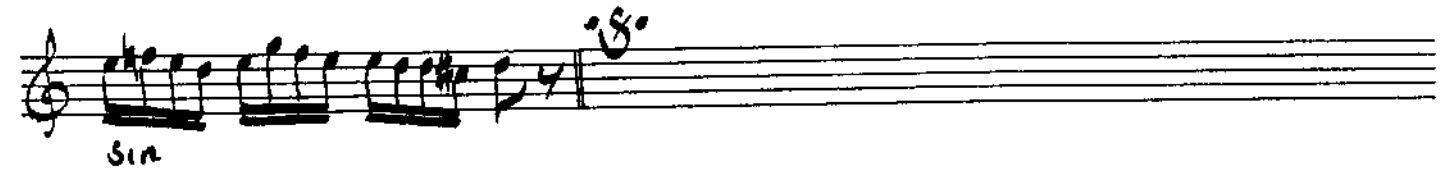
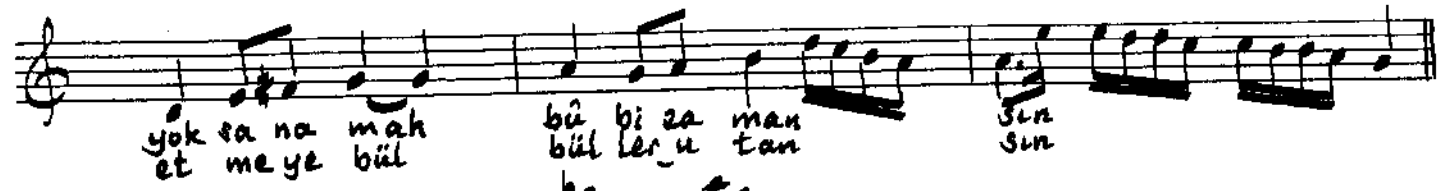


Muallim Sofyan

# SÜZİDİLÂRÂ ŞARKI

Beste: Üdi Hasan Bey  
Güfte: Süleyman Nazif



Alemde bedel yok sana mahbûb-i zamansın  
Gül gibi açıl gülsene gel taze fidansın  
Görsün seni bülhâl gül-i zîbâsını an  
Gel arz-ı cemâl etmeye bülbüller utan